

16

## ACT ONE

**Drumming Interludes** Annie Geissinger

**Introduction** Becca Atkins & SJ Williams

**Mistress of Ceremonies** Becca Atkins

**At The Movies**

*Written by* Kato McNickle  
*Directed by* SJ Williams

*Sicko & Heburped* Bob Davidson & Howard Beatman

*Indian Princess* Judy Essex

*Doctor* Warren Thurlow

*Marlon* Rich LaBoue

*Clousseau* Sam Bliven

*Jeffrey* Matt Olson

**Insanity**

*Written by* Elizabeth Lathrop  
*Performed by* Elizabeth Lathrop

**The Intake**

*Written by* Bob Davidson & Becca Atkins  
*Directed by* SJ Williams

*Case Manager* Dylan Croft

*Mental Health Worker #1* Judy Essex

*Mental Health Worker #2* Bob Davidson

*Joan Davis Lodge* Becky Moss

**Preservation Is The Battle Cry**

*Written by* Sam Bliven  
*Performed by* Sam Bliven

**Vending Machine**

*Written by* Howard Beatman  
*Directed by* Beth Campbell Stemple

*Robin* Elizabeth Johnson  
*Machine* Rick Maloney

**Out In The Cold**

*Written by* Mike Zito  
*Performed by* Mike Zito

**Diner**

*Written by* Kato McNickle  
*Directed by* Becca Atkins

*Waitress* Gayle Hansley

*Busboy* Dennis Leveille

*Diners* Matt Olson & Warren Thurlow

*Husband & Wife* Howard Beatman & Carol Lamchik

*Julia* Sam Bliven

17

**Intermission 15 Minutes**  
Refreshments are available in the lobby

## ACT TWO

**Back In Dysfunction Junction**

*Written by* Kato McNickle  
*Directed by* Becca Atkins

*Nettie* Elizabeth Johnson

*Sylver* Dolores Lewis

*Cooter* Rich LaBoue

*Pickles* Beth Campbell Stemple

*Nickles* Matt Olson

**11th Hour Rap**

*Written by* SJ Williams  
*Performed by* Becca Atkins

**The Traveler**

*Written by* Francis Marion & Kato McNickle  
*Directed by* SJ Williams

*Traveler* Dylan Croft

*Stranger* Sam Bliven

*Sprites* Judy Essex & Marilyn Neale

*Attendants* Rick Flanagan & Rick Maloney

**A Rainy Day**

*Written by* Jeff Olson  
*Performed by* Wire and Wood

**Day O'Reckoning**

*Written by* Kato McNickle & SJ Williams  
*Directed by* SJ Williams  
*Choreographed by* Becca Atkins

*Calypso Jay* Louis Hubbard  
*The Halfwits* Gayle Hansley, Carol Lamchik, Dennis Leveille, Matt Olson & SJ Williams

*Chairperson* Judy Essex  
*State Employees* Dolores Lewis, Becky Moss, Warren Thurlow & Dylan Croft

*Arnold* Howard Beatman

---

*There may be last minute substitutions in acts and/or cast.  
As always, flexibility is the key ....*

## Production Crew

Director	Becca Atkins
Production Manager	SJ Williams
Stage Manager	Kato McNickle
Asst. Stage Manager	Linda Jabren
Head Gofer	Sharon Kitlinski
Stage Crew	Rick Flanagan, Marshall Robishaw, Frank Zito, Rick Maloney, David Adamson
Load-in Crew	Cathy Bearce, Deb Cluff, Ralph Piscitelli, Howard Beatman, Tom Lee, Marshall Robishaw, Linda Jabren, Dennis Leveille, Sharon Kitlinski, Heidi Boehm, Kato McNickle, Jan Robes, Becca Atkins, Rose Sistare, Warren Thurlow, Rick Flanagan, Dylan Croft, Matt Olson, Mike Minzy, SJ Williams
Lighting Design	Becca Atkins with support from Jim Stidfole & Ed Chiburis
Lights	Liz Lathrop, Deb Cluff
Sound	Jan Robes
Music/ Sound Effects	Howard Beatman, Becca Atkins, Andrea Vang, Wendy Barrett, SJ Williams, Sharon Kitlinski
Band	Wendy Barrett on Guitar, SJ Williams on Bass Dick on Drums
Scenery/Props/ Costumes	Joye Ford, Trish Morales, SJ Williams, Kato McNickle, Sharon Kitlinski, Becca Atkins
Make-up	Liz Lathrop, Stacey Lion-Lee, Linda Fazio, Judy Essex
House Manager	Heidi Boehm
House Crew & Concessions	Bev Gaska, Andrew Lee, Adam Lee, Stacey Lion-Lee, Sarah Lion-Egan, Cathy Bearce, Rose Sistare, Chris Milles, Connie Bement
Ticket Sales	Tom Lee
Poster/Program/ Misc. Graphics	Kato McNickle, Becca Atkins
Ad Sales/Promotion	Sharon Kitlinski, SJ Williams, Tom Lee, Howard Beatman, Kato McNickle, Becca Atkins
Video	Tom Lee, Linda Deutch, Stephen Marks
Photography	Kato McNickle
Well-Being Coordinators	Laureen Schiavone & Volunteers of A Moveable Feast

## Board Members

### Board of Directors

Bill Bingham Linda Deutch  
Dr. Barbara Hoch Dolores Lewis

### Advisory Board

Ruth Buzzi - Actress/Comedienne

Nicholas DiMichael  
Founder, Connecticut Alliance for the Mentally Ill

Dr. Claire Gaudiani - President, Connecticut College

Sam Gejdenson - U.S. Congressman

James C. Griffin  
Director of Management & Program Analysis Services

Ronna Sue Keil  
Founder, Second Step Players and Artreach, Inc.

Reid MacCluggage - Publisher & Editor, The Day

Blanche McCrary Boyd - Author

Rollie McKenna - Photographer, Author

Faith Middleton  
Radio Journalist, Connecticut Public Radio

Daniel Potter - Director, Mystic Paper Beasts

John S. Strauss, M.D.  
Professor of Psychiatry, Yale University

Jill Bolte Taylor, Ph.D.  
Assistant Director, Harvard Psychiatry Brain Collection

VAdm. Joe Williams, Jr. - U.S. Navy, Retired

## Special Thanks to...

- The CT Department of Mental Health and Karen Kangas and the Office of Consumer Education for funding for the Second Step Players
- The Federal Department of Education for funding under two grant sources for *Work Hard/Play Hard* and the *National Mental Health Performers' Network*
- Reliance House, Inc. and Southeastern Mental Health Authority for all around general support
- The Unitarian Universalist Church of Norwich, Inc. for donating rehearsal space
- Norwich Hospital for support ranging from rehearsal space to a location for storage of props and scenery
- Public Safety at Norwich Hospital
- Joye Ford and Trish Morales for sewing expertise
- Dolores Lewis, Bev McNickle, Sue Ponder, Elsie Onyx, Madelyn Schuller, Karen Spaulding and Mrs. Williams for baking those deliciously delightful brownies and cookies for sale during intermission
- Larry Okerblom for videography services
- Reid MacCluggage and The Day for donating advertising space
- Tami Bordeau and The Norwich Bulletin for donating advertising space
- Amy Dunlop and Connecticut Magazine for the wonderful review

AND:

...to Coca Cola for donating soda

Community support  
helps us thrive!!  
Thank you!!!

## About the Musicians...

**Annie Geissinger, MA** is an Expressive Arts Therapist who leads drumming workshops in the New England area. Annie has been a student of master drummer Abdoul Doumbia and other West African drummers for 9 years. She is a teacher of Authentic Movement and is co-editor of "A Moving Journal," an international publication about Authentic Movement.

**Elizabeth Lathrop** has been performing with the Second Step Players for many years, both acting and singing in the Coffeehouse. This is her first performance of an original song.

**Sam Bliven** is an advocate for mental health issues. He is Co-founder of Certifiable Citizens, a name which he coined. He has done voice overs and impressions on FM radio. Though he has been playing piano since age 5, writing music is fairly new to Sam.

**Mike Zito** is a self-taught multi-instrumentalist and songwriter who is dedicated to writing, recording and performing original music. Mike has served as co-sponsor of a local songwriters workshop, and has written and produced radio jingles and music for industrial training programs.

**Wendy Barrett** has been performing country music for the past 20 years. She is half of the performing duo Blue Blazes. Wendy participates in the back up band for our Annual Come Together Coffeehouse each year, and this year we are lucky to have her performing in the O'Neill show as well.

**SJ Williams** is the other half of the country duo Blue Blazes. She is also the Executive Director of Artreach. Within the next couple of years, SJ's plan is to make a career change, move to Nashville, write country songs, and eventually go to Memphis to live at Graceland.

**Becca Atkins** is the Director of Second Step Players. She is learning how to play guitar, and loves to sing. Her main influence (for today at least) Queen Latifah, could not be here tonight to perform with her, but sends her love.

**Wire and Wood**, otherwise known as Jeff and Donna Olson, have been performing as an acoustic duo since 1993. They are very involved with the Rhode Island Songwriters Association, and they focus on performing original songs with a message. Their song "A Rainy Day" appears on the *Our Invincible Summer* CD, a benefit recording on behalf of the Providence Center. They have an upcoming CD entitled *The 12 Steps of Christmas*.

29

*Thank You...*

*for coming to our show.  
Your presence has made a  
difference in our lives.*

**Please  
SUPPORT OUR  
ADVERTISERS!!!**

The businesses who have Advertised  
in this program have supported us  
generously. Please use this program  
as a reference, and support  
the businesses that support us!

**STIGMA** - 1. A mark or  
token of infamy, disgrace or  
reproach. 2. A mark  
indicative of a history of a  
disease or abnormality.



Stigma is often experienced by a person who has been labeled or diagnosed with a psychiatric illness. Stigma is most often felt as an experience of being ostracized or discriminated against because one has been identified as "mentally ill." Stigma, as with all prejudices, arises out of fear and ignorance regarding the nature and causes of emotional illnesses.



*Happy  
11th Anniversary  
at the O'Neill,  
Second Step Players!  
Keep up the good work!*

**Don Juan's**

(860) 437-3791 • 1405 Williams Street  
New London, CT





Lawrence and  
Memorial  
Hospital

## Adult Partial Hospitalization Programs

Comprehensive treatment  
for survivor issues;

- Dissociative disorders
- Bipolar disorders
- Depressive disorders
- Personality disorders
- Adjustment disorders
- Eating disorders
- Schizophrenia
- Dual disorders.

CHAMPUS, Medicare, Medicaid, and most other  
insurances accepted. Sliding scale available.  
For information or appointment, call 444-5141



*Quality Pharmacy Services Since 1951*

John A. Kiszkiel II, RPh, FASCP

Lori J. Lord, RPh

Melissa T. Mahar, RPh

Andre LaCombe, RPh

Priscilla Wild, CPT

\* Medicare \*

Ostomy Supplies • Diabetic Supplies

Medical Equipment Sales & Rental

Greeting Cards • Russell Stover Candies

Home Health Care Products

**FREE DELIVERY**

Phone: 889-9857

Fax: 886-0950

213 Central Avenue (Corner of 4th St. & Central Ave.), Norwich, CT

Sales

Service



**Volvo Specialists**

*European Auto  
supports the efforts of the  
Second Step Players. Keep up  
the good work!*

8 Colton Road • East Lyme, CT 06333  
(860) 739-4894/9870

**J. SOLOMON INC.**



a complete line of  
**STATIONERY AND OFFICE SUPPLIES**

208 Bank Street New London, CT 443-8461

**Fine Audio & Video Components for the Home**

**Roberts**  
Audio Video

Serving the  
shoreline  
since 1934

442-5314  
90 Bank St.  
New London



**GOOD LUCK**  
with your production!

*From your friends in the  
Mohegan Striders  
Association*

**JOYDON'S  
HOUSE OF LEISURE**

COINS • STAMPS  
SPORTS CARDS • COMICS  
ESTATE JEWELRY  
COLLECTIBLES

*Area's Leading Buyer of  
Gold and Silver  
For over 40 Years*

**WE BUY, SELL and TRADE  
Anything The World Collects**

77-88 Captain's Walk  
New London, CT 06320  
443-5887

# TRADITIONS

**BRIDAL - FORMAL WEAR - TUXEDOS**

**DETAILS MAKE THE DIFFERENCE**

Complete Wedding Center  
Custom Designs & Expert Alterations  
Tuxedo Sales & Rentals

Hours Tues. & Thurs. 9:30 am - 9:00 pm  
Weds. & Fri. 9:30 am - 5:30 pm  
Sat. 10 am - 4 pm & Sun. Noon - 4 pm

Norwich **886-6966**

363 WEST MAIN ST., NORWICH  
I-395 Exit 80/ East Rt. 82

**Pawtraits**  
Portraits of your pets

by **Kato  
McNickle**

396 Tyler Avenue  
Groton, CT 06340

860-445-2909

Single subject 8x10" portrait:  
\$30 pen & ink  
\$50 watercolor  
\$10 color caricature  
By appointment only.

*The pawfect gift!*

**Attention Playwrights**  
*living in Southeastern Connecticut & Westerly, RI.*

**The 5th Annual Local  
Playwrights' Festival**  
*wants to hear from you!*

*To receive submission guidelines  
send a SASE to:*  
Theatre Network  
C/O Lee's Toy & Hobby  
Groton Shoppers' Mart  
Groton, CT 06340

*Deadline for submission  
is January 27, 1997.*



For more  
information  
call Peter Marcus  
at (860) 445-4411



**445-5276**

223 THAMES ST., GROTON

**Specializing In:  
Freshly Made Pasta And  
Pasta Accompaniments**

**Enjoy Lunch Or Dinner  
Everyday Inside Or On Our Deck  
Or Take Home A Lb. Of  
Our Pasta And One Of Our  
Own Sauces**

VOTED BEST VALUE IN NEW LONDON COUNTY  
1991 - 1996 READER'S CHOICE AWARD-CONNECTICUT MAGAZINE

**TAKE OUT MENU • WHOLESALE • CATERING**

*The Patti-O*

**BREAK A LEG**  
**Second Step Players!**

**889-6909**

*Serving Breakfast, Lunch and Dinner*

**Hours:**

**Tuesday through Sunday 6 am - 9 pm**

**Monday 6 am - 3 pm**

**257 West Town Street - Yantic**

**1996/97 BROADWAY  
at the GARDE SERIES**

Sat., October 12  
3 & 8 pm



**THE  
SOUND  
MUSIC**

Sun., October 20  
3 & 7 pm



**KISS  
OF THE SMOKE  
WOMAN  
THE MUSICAL**

**ANNIE  
Get Your GUN**

Sat., Nov. 9 • 3 & 8 pm  
Sponsored by Citizens Bank

Sat., Jan. 18, '97 • 3 & 8 pm

Sat., March 1, '97 • 3 & 8 pm  
Sponsored by Pfizer Inc

Sun., March 16, '97  
3 & 7 pm

Sponsored by  
Electric Boat



Sun., May 11, '97  
3 & 7 pm

Co-Sponsored by  
Older Mistick Village &  
Norwich Savings Society

**Subscribe Today!**  
**(860) 444-7373**

**GARDE ARTS  
CENTER**  
325 State Street, New London, CT

COUNSELING ASSOCIATES, INC.

*Rebecca Barton, M.A.*

*Michael Cohen, M.S.W.*

Hartford  
232-6876

Willimantic  
423-2228

Mystic  
536-4383

**Break a Leg  
Second  
Step  
Players!**

Brenda's Hair Care  
Stonington, CT  
536-7564

*"IF YOU CAN THINK IT,  
WE CAN INK IT"*

**VITA-PRINT**

**FULL SERVICE  
PRINTERS**

**(860) 887-9322  
FAX (860) 886-6175**

**22 CASE STREET  
NORWICH, CT 06360**

**Norwichtown Veterinary Hospital**



AMY L. CROCKETT, D. V. M.  
ALICE M. KROGER, D. V. M.

177 Otrobando Avenue  
Norwich, CT 06360  
(860) 886-0188



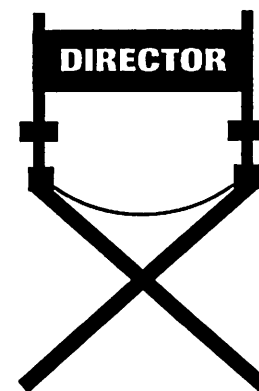
**MSB**

**Meyers & Bailey**  
*Investment Company*

**Zane Megos**

M & B  
supports  
the outstanding work  
of the staff and  
participants  
of the  
Second Step Players.  
Happy  
11th Anniversary!

**Lights...Camera...  
ACTION!!!**



*54 Broadway • PO Box 307  
Norwich, CT 06360*

*(860) 886-6548  
(860) 885-1010 FAX*



Nothing compliments a Great Show like  
a Gourmet Coffee... or an Espresso...  
or a Cappuccino... or a Fresh Baked Pastry...  
or some Ice Cream... or a Deli Sandwich... or  
just about anything The Liberty Tree has to offer.



At The Corners Of Market And Main  
Downtown Norwich

886-4465 • 2



## CONNECTICUT CENTER

*For Human Growth & Development*

**GESTALT • BIOENERGETICS • PSYCHODRAMA**

- Individual • Marriage • Family • Group • Drug • Alcohol
- ACOA Issues • Anxiety • Depression • Stress Disorders
- Codependency • Sexual Abuse
- Training Program for Body Centered Psychotherapy

Holly Hatch, L.C.S.W., B.C.D.

Shirley Swanson, M.A.

Walter van Sambeck, Dpl. Psy., CADC, CCS, NCC  
and Associates

244 South Main Street  
Colchester, CT 06415

537-3977 or  
FAX 537-5426



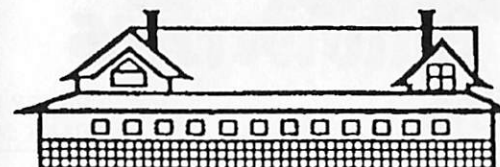
## Carper's Chimney Service

Cleanings, Repairs

James R. Carper  
(860) 464-1533

Breakfast • Lunch • Dinner

## OLDE TYMES RESTAURANT



**Full Catering Services • Open Daily**

360 W. Main St.  
Norwich, CT 06360

Rodney & Lucille Green  
(860) 887-6865

Individual and Group

By Appointment

**Linda Doran**

M.A., R.N., C.S.

Counseling and Psychotherapy

14-14 Mason's Island Road • Mystic, Connecticut 06355 • 860-536-8804



20

The Unauthorized Alternative To Dealer  
SALES • PARTS • SERVICE  
AUDI • BMW • VOLVO • VOLKSWAGEN



698 Bank Street  
New London, CT 06320  
Telephone (860) 443-1066

PERRY BAUMHAFT  
FRANK JANNARONE



Facials • Tanning • Make-Up  
Manicures • Electrolysis  
Walk Ins Welcome  
Gift Certificates Available

## Hair Unique Salons

77 Salem Turnpike, Salem Plaza, Norwich - 886-5355  
Mystic Factory Outlets, Mystic - 536-4976

*Come face to face with...*



- ≈ Penguins flying underwater at Penguin Pavilion.
- ≈ Dolphins and beluga whales as they reveal amazing natural skills in the Marine Theater.
- ≈ Seals and sea lions that roar at Seal Island. Several demonstrations and feedings daily.
- ≈ Thousands of colorful marine animals in more than 40 naturalistic exhibits at

## Mystic Marineline Aquarium

Mystic, Connecticut

Exit 90, I-95 • Open daily • 860.572.5955

Mystic Aquarium is a nonprofit marine science center, dedicated to education, research and conservation, where learning is fun for all ages.



*Good Luck,  
Second Step Players*

*from*  
**RELIANCE HOUSE,  
INC.**



A Business of  
**RELIANCE HOUSE, INC.**

**IRON**  
42 BROADWAY

Serving  
freshly made  
soups,  
sandwiches,  
and desserts



**SKILLET**  
NORWICH, CT

All Made on  
premises.  
OPEN DAILY  
7:45 AM - 2 PM  
886-0318

GIFTS • CLOTHING • JEWELRY • HOME FURNISHINGS



W H Y E V E R N O T

17 West Main Street, Mystic, CT 06355 (860) 536-6209

## ***Magazines & More***

THE AREA'S LARGEST SELECTION OF MAGAZINES & NEWSPAPERS

*Timothy Michaels, Proprietor*

77 Salem Tpke • Suite 105 • Norwich, CT 06360  
860-886-1855


*With over 2000 titles, we have something for everyone!*

## Chelsea Groton Savings Bank

In Connecticut (860) 823-4800 or 572-4000  
In Westerly, Rhode Island 599-2406  
Mortgage/Loan Rate Line (860) 823-4888  
Savings/CD Rate Line (860) 823-4999  
Tele-Bank (860) 823-4884  
Touch Tone Loan 1-800-754-9246



Member FDIC

 Equal Housing Lender

## CAROLYN'S MUSIC OLDE MISTICK VILLAGE MYSTIC, CT 06355

Classical • Jazz • NewAge  
Oldies • Pop/Rock • Folk  
CDs • Cassettes  
Sheet Music • Musical Gifts

**860-536-5171**

**FAX: 860-536-2023**

## *Mystic Disc*

*Rare Music  
and Posters*  
Import CDs  
Rare Stuff & LPs

**(860) 536-1312**

*Where the Music Still Matters*

10 Steamboat Wharf  
Mystic, CT 06355

FAX (860) 536-8957



**BETHANY  
BOOKSTORE**  
Barbara E. Hoch, Ph.D.

**(860) 442-2473  
or  
(516) 788-7844**

**By Appointment Only**

**BREAK A LEG**  
**Second Step Players!**



**from**  
**First Step Inc.**

**Celebrating our**  
**20th Anniversary**  
**of connecting people**  
**with their communities,**  
**homes and jobs.**

**442-4289**

PO Box 2170  
38 Green Street  
New London, CT



**MEDICAL**  
**DRUGS, INC.**

Lawrence Cammarato, R.P.H., Mgr.

146 Main Street, Norwich, CT

**(860) 889-0881**

**DIAMONDS \* GOLD \* WATCHES**  
**PRECIOUS STONES**



Mon. - Sat.  
9:30 - 5:30  
Friday Night  
Open 'til 8 pm

Joseph S. Parzych  
President  
(860) 443-7792

48 Captains Walk  
New London, CT 06320

*Carolyn's*

*Fine Pastries*  
*Coffees*  
*Teas*

Carolyn Johnson, Owner 203~447~3490  
435 Ocean Avenue, New London Connecticut 06320

**Your Macintosh Experts**  
**Sales • Support • Service**



**The Computer Lab**  
345 Broad Street  
New London, CT 06320  
203 - 447 - 1079

Authorized Apple Reseller

*If you can*  
*talk, you can*  
*sing.*



*If you can*  
*breathe, you*  
*can dance.*

*a friend from Mystic, Connecticut*



**the EMPORIUM**

Mystic's Celebrated Victorian Landmark  
3 Fabulous Floors of Fun Gifts, Surprises and Nostalgia



15 Water • Historic Downtown Mystic • 536-3891

The Most Comprehensive  
Counseling Center in Connecticut

## UNITED SERVICES, INC.

**ADULT BEHAVIORAL HEALTH PROGRAMS**  
ADULT OUTPATIENT SERVICES  
CASE MANAGEMENT SERVICES/EMERGENCY SERVICES  
COMMUNITY LIVING SERVICES  
VOCATIONAL AND SOCIAL REHABILITATION SERVICES

Other Programs Include:

Addiction Recovery Services • Child and Family Services  
• Community Education and Development  
• Domestic Violence Program • Employee Assistance Program  
• Latino Family Services • Multicultural Parent Support Center  
Retired and Senior Volunteer Program • Young Parents Program

1007 North Main St.  
Dayville, CT 06241  
774-2020

233 Route 6  
Columbia, CT 06237  
228-4480

132 Mansfield Ave.  
Willimantic, CT 06226  
456-2261



Many thanks from the cast and crew of The Eleventh Hour to  
A Moveable Feast  
for providing pre-show meals during our production.

## A Moveable Feast

is a home delivered meal program which provides hot meals to homebound  
individuals who are living with HIV/AIDS and their dependents.

Call 447-2865 for more information or to volunteer.



**JO' JEVON**  
**Tibetan Spaniels**  
AKC Puppies, Adults & Stud Services

Jean Wright  
125 Whalehead Road  
Gales Ferry, CT 06335  
(860)464-1179

Joan Reiter-Child  
62 Mowry Street  
North Haven, CT 06473  
(203)288-4405

*Over five generations of American Champions*

## DiFiore's Quality Car Care and Janitorial



Auto Detailing and  
Car Cleaning Center.  
Gift Certificates Available  
Free Pick-Up & Delivery  
Fully Insured

Janitorial Services  
Office Cleaning • Floor Care  
Carpet Cleaning  
Power Washing  
Window Washing

*"Specializing in whole house cleaning, inside and out!"*

BONDED & INSURED  
FREE ESTIMATES

**886-8151**



**DOHERTY  
BEALS &  
BANKS, P.C.**  
CERTIFIED PUBLIC  
ACCOUNTANTS

Serving your accounting and tax needs since 1948

187 Williams Street, New London, CT 06320 443-2033



TIRES  
BATTERIES

"JERRY"

ALIGNMENTS  
AIR-CONDITIONING
**LAUREL TIRE, INC.**  
 "ON THE HILL, BUT ON THE LEVEL"

MUFFLERS

 315 LAUREL HILL AVE. (860) 889-7304  
 NORWICH, CONNECTICUT 06360
REPAIRS  
BRAKES

## Woody's Service

 Route 12 and Crystal Lake Road, Groton, CT 06340  
 (860) 445-8146

**Prompt, Professional Service!!**

 U-Haul Rentals • Radiator Repair  
 All Repairs - No Job Too Big or Too Small  
 We Feature AIRWAY Car Rentals

*Stephen Woodruff, Owner*

*Many thanks to the runners who participated in the*  
***Second Step Players***  
***Annual Recognition Run for Mental Health***

Tom Lee	John Brown
Mark Ruffo	Lou Martinez
Mary Jane Ruffo	Jerrienne Ranierra
Jim Carper	Cas Grygorcewicz
Steve Hancock	Dean Festa
Jacque Burzicki	Kitty Goulet
Mike Van Vlanderen	Gary Mandleberg
Mike Minzy	Chris Petersen
Steve DePolito	Kathleen Krider
Heather Trocki	Don Shubert
Jessica Blais	Bob Morgan
Kevin Gallerini	Tina Huard


**Artreach**  
 ...because creativity heals...


It has been a busy year for the three programs sponsored by Artreach.

The *Second Step Players*, a professional performing troupe comprised of performers and production personnel who have experienced or been labeled with mental illnesses, spent another year touring throughout the Northeast and Pennsylvania with great success. We also took our special brand of original comedy to New York state for the first time and it looks like we'll be heading that way again this Fall. There are several new members of the troupe making their acting debuts this year at the O'Neill and we hope to incorporate a few of them into next season's tour. The troupe is always growing, breathing, expanding and changing; what an amazing eleven years we've had.

*Work Hard/Play Hard*, a special and exciting recreation program designed for mental health consumers who are employed, is fast approaching the end of its three-year Federal funding cycle. It is a credit to Tom Lee and the consumer driver/coaches that in this year of budget cuts, we have obtained funding from the CT Department of Mental Health and Addiction Services (DMHAS) to keep the program alive and kicking. DMHAS should also be congratulated for having the foresight and such commitment to its consumers that they won't let a valuable community-based, consumer-driven program die.

The National Mental Health Performer's NETWORK is also nearing the end of its three-year Federal funding cycle and though the program was designed to terminate after three years, it looks like it will live on as a self-sustaining entity of networking consumer arts groups throughout the Northeast. Kato McNickle has done a magnificent job coaching, training and guiding the seven troupes from Maine, Vermont, New Hampshire, Rhode Island, Connecticut and Pennsylvania. Thanks to her and the efforts of the many committed members, these consumer-driven groups have learned the nuts and bolts of running a theater troupe and experiencing first hand that creativity heals .....

Artreach, Inc. will be busy trying to stay aloft and alive as managed care establishes its inevitable foothold in Connecticut. The odds may seem to be against us but we have no doubt we will not only survive, but prosper as well. We've always felt the magic that surrounds our existence and just have to trust it will continue to sustain us.

Peace to you all. Toward a better world ..... The staff of Artreach, Inc.





The National Mental Health Performer's NETWORK was funded in 1993 by the Federal Department of Education to help start and give administrative and creative support to seven new mental health consumer-driven theater projects throughout the Northeast. Kato McNickle, a valued Artreach employee for six years, undertook this arduous task as Creative Director of the NETWORK. The program is nearing the end of its three-year Federal funding cycle but will live on as a self-sustaining entity of networking consumer arts groups from Maine, Vermont, New Hampshire, Rhode Island, Connecticut and Pennsylvania.

Kato McNickle has done a magnificent job coaching, training and guiding these seven troupes. Thanks to her and the efforts of the many committed members, these consumer-driven groups have learned the nuts and bolts of running a theater troupe and experiencing first hand that creativity heals .....

Kato will leave Artreach in October when the NETWORK funding ends and we will miss her dreadfully. Her talent and commitment to the Artreach philosophy are huge and we will feel deeply the black hole her leaving creates.

We wish her all the best. We'll miss her. We'll find a way to get her back.

Thanks for everything, Kato - we love you!

## Dedicated to musicians and the performing arts for over 60 years

Keyboards, Guitars, Amps, Drums, Lights, P.A. Systems,  
Recording Equipment and much more.



**Call 443-6810**  
For the Caruso School of Music  
Lessons for all instruments

Call: (860) 442-9600  
FAX: (860) 442-0463

Come Visit Our New  
22,400 Sq. Ft.  
Showroom/Store

94 State Street  
New London, CT 06320

## FLOCK THAT RE

674 Williams Street  
New London, CT 06320  
(860) 443-3119

Working as part of the  
New London Promenade Play  
September 27 & 28  
In the streets of New London  
from the Garde Arts Center to the  
Soldiers & Sailors Monument.  
**Celebrating**  
New London's 350 years!

## BMT's screen printing



Shirts    Sweats  
Hats    Uniforms  
Jackets    Mugs

**Debra Bilda**  
**889-4674**

**12 Providence St.**  
**Taftville, CT 06380**



112 North Street, Groton, CT 06340

(860) 445-1523

239 Jefferson Ave.  
New London, CT  
06320

447-8953  
or 44-style





**CLIMB TO  
THE TOP**

**SECOND STEP  
PLAYERS!!**

*Annie Lee*

*Alpha*  
**SIGNS**

"We create, build and  
maintain all types of signs"  
Electrical Signs, Plastic, Neon  
Computer Cut, Aluminum,  
Truck Lettering, Hand Painted,  
Logo Design

SPECIALIZING IN  
**CARVED & SAND BLASTED**  
GOLD LEAFED WOODEN SIGNS

**ROB RIZZUTO**  
476 N. Main St., Norwich, CT  
Phone: (860) 887-5757  
Fax: (860) 887-7796



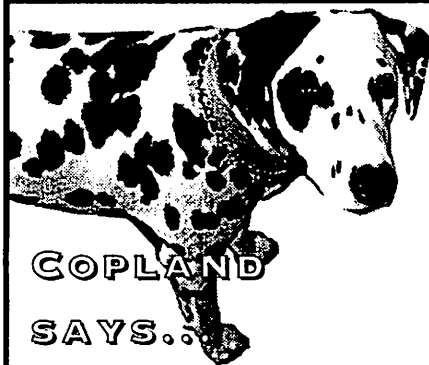
**THE  
Dime  
Savings  
Bank** MEMBER  
F.D.I.C.

NORWICH -  
BROADWAY  
GREAT PLAINS PLAZA  
TAFTVILLE - RTE 97  
LEDYARD CENTER  
LUSSEON - BETTER VAL-U  
ATM Locations

Mon.-Wed. & Fri. 9-3  
Mon.-Wed. 9-5  
Mon.-Wed. 9-5  
Mon.-Thurs. 9-5  
ATM Location Only - Available 24 Hours Daily

Thurs. 9-5  
Thurs.-Fri. 9-6  
Thurs.-Fri. 9-6  
Fri. 9-6

Sat. Closed  
Sat. 9-12  
Sat. 8:30-12  
Sat. 8:30-12



**COPLAND  
SAYS...**

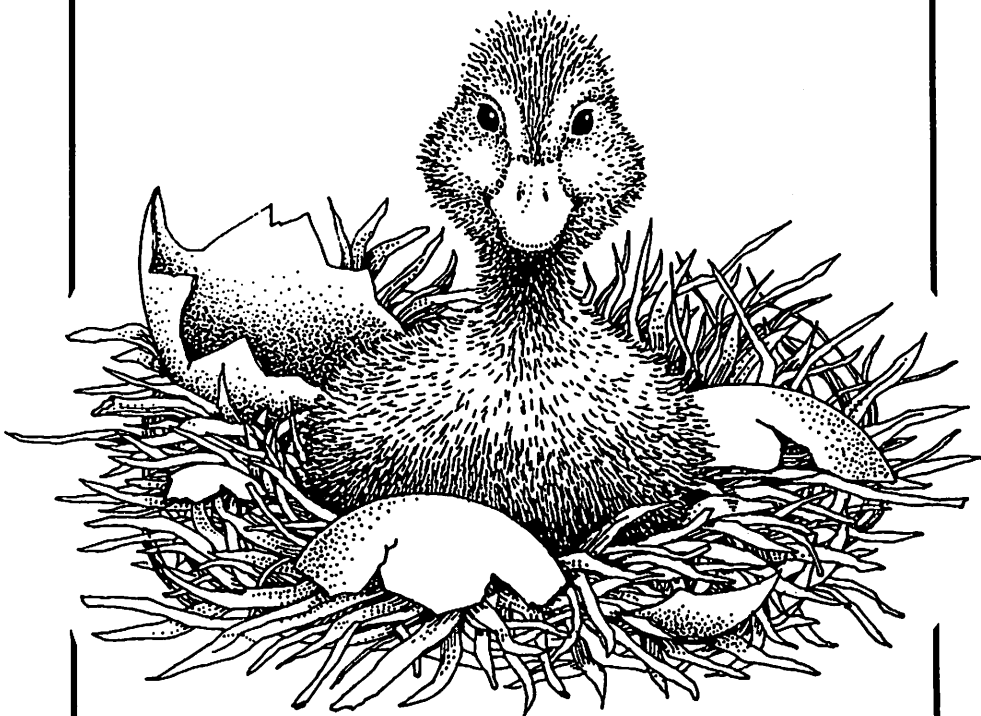
**"...BREAK  
A LEG,  
Second  
Step  
Players!"**

**Artreach**  
...because creativity heals...

## STATEMENT OF PURPOSE

Artreach, Inc. believes that creativity and recreation in all their forms are profoundly empowering and consequently healing endeavors. We support people who have experienced psychiatric, physical and developmental disabilities to become performers, artists, musicians and writers or to expand their ability to recreate. As a results-oriented organization, Artreach's goals are to:

- \*\* Empower people who have experienced disabilities to create a culture of their own using role models that come from their own ranks; to celebrate their strengths and encourage them in their struggles by creating art forms that speak to their experiences and values;
- \*\* Educate the general public and future generations, through the use of cultural activities, about the value of people regardless of how they are labeled or disabled;
- \*\* Produce and tour high-quality published work, artistic exhibitions, musical recordings and performances, and theatrical events, primarily using artistic and production personnel who have experienced disabilities;
- \*\* Provide high-quality training to artists and production personnel who have experienced disabilities;
- \*\* Provide training to other professionals in the technology involved in the production of artistic events using artistic and production personnel who have experienced disabilities;
- \*\* Expand the community-based recreational opportunities available to people who have experienced disabilities;
- \*\* Develop technologies and strategies to support people who have experienced disabilities to integrate into existing community-based recreational opportunities;
- \*\* Educate the general public and the "disability community" about the essential and pivotal role recreation plays in a complete and fulfilling life for people with or without disabilities.



### Discover a Magical Moment at Olde Mistick Village

From the moment you arrive at Olde Mistick Village a special feeling comes over you.

Duck ponds, flower gardens and more than 60 quaint village shops transport you into an enchanting world of 19th century charm. Here you'll discover unique and wondrous items and gifts from all over the

world.

Come wander through Olde Mistick Village and feel the magic.

For a complimentary special events calendar call or write:  
Olde Mistick Village, PO Box  
176, Mystic, CT 06355, (860)  
536-4941.

**Olde Mistick Village**

## Enjoy The Best Of Both Worlds... Quality and Value

  
**J.P. Daniels**  
**Restaurant**  
**Catering Services**  
**Established 1981**

Rated \*\*\* Mobile Guide  
\*\*\* AAA Guide

J. P. Daniels announces its *new menu*...more interesting, more expansive, with entrees starting at \$5.95! So, you can still enjoy award-winning atmosphere, excellent service and mouth-watering fare, all in a *smoke-free environment*, all at a price that's right!

Children's entrees from \$2.99

Dinner from 5 pm

Sunday Brunch Buffet 11:00 - 2:00

Rte. 184 • Old Mystic, CT

(860) 572-9564

*Many thanks to the following for serving as  
ticket outlets for this year's show*

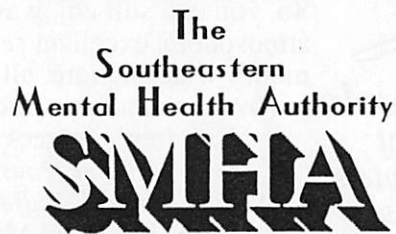
**The Mystic Disc**  
10 Steamboat Wharf, Mystic  
536-1312

**Yah-Ta-Hey Gallery**  
279 Captain's Walk/State St., New London  
443-3204

**Magazines and More**  
77 Salem Tpke., Suite 105, Norwich  
886-1855

**University Music**  
Norwichtown Mall, Norwich  
886-5800

# *We're not Going Anywhere!*



When Norwich Hospital closes, the Southeastern Mental Health Authority and its **wide range of community-based** provider agencies will do what it has been doing for many years...

Continue to **expand** the extensive level of **community-based** services that are available to persons with psychiatric disabilities who live in Southeastern Connecticut.

## **The Affiliate Network of the Southeastern Mental Health Authority**

The W.W. Backus Hospital • Community Enterprises, Inc.  
First Step, Inc. • Reliance House, Inc. • Artreach, Inc.  
Community Mental Health Services of Southeastern Connecticut, Inc.  
Norwich Hospital • United Community Services, Inc.  
Visiting Nurse Association of S.E. Connecticut

*Artreach, Incorporated  
presents  
The Second Step Players  
in*

67#V.B.  
Lila

# **The ELEVENTH Hour**

*A Relevant & Irreverent Look  
At Mental Illness*

**September 5, 6 & 7 at 7 O'Clock PM**  
at the **Eugene O'Neill Theater Center**  
Waterford, CT.

**This is  
your  
WAKE-UP  
call!**

*Tick! Tick! Tick!  
Tick! Tick! Tick!*

