

ACT ONE

Master of Ceremonies Becca Atkins

Sapphire

Written by Frederick Vaughn
Directed by Becca Atkins

Saffire Helen Cronin
Dr. Cross Saba Drolet/Rich LaBoue
Nurse Judith Essex
Hospital Aide Tarik Clayton
People in Emergency Room Denise Hutchinson & William Hine
Autograph Hound Marilyn Neale
Aide with Meds Dasya Butts
Patient John Lamar
Aides Sara Stockton & Ruth Barrie

Why I Hate Reality

Written by Frederick Vaughn
Co-Directed by Dylan Croft and Becca Atkins

Leroy Howard Beatman
Blanche Becca Atkins
Blanche's Secretary Dennis Silva
Sarah Robin Fleming
Derek Gerald Cory
Marie MaryAnn Johnson (Thu. & Fri.)
& Marilyn Neale (Sat.)

Crazy On the Range

Written by Frederick Vaughn
Directed by SJ Williams

Sojourner John Lamar
Kansas Dylan Croft
Tex William Hine
Miss Dixie Becca Atkins
Grill Guy Joey Hammond
Wedding Singer Gerald Cory
Bernice Marilyn Neale
Sophie Dolores Lewis

INTERMISSION

ACT TWO

The Common Itch

Based on a full length work by Darin Keech of Band of Humans

Original Music by Band of Humans.

"This Life" by SJ Williams & Alan Winslow.

Story adapted for The Second Step Players by Becca Atkins

SCENE ONE: Central Park

Martha Anna Maria Trusky
Jude Dan Howarth

SCENE TWO:

The Beach, Jersey Shore
Jude Dan Howarth
Mitch Irving Collins
Skeeta Terry Alderman
Prudence SJ Williams

SCENE THREE:

The Beach, the next morning
Jude Dan Howarth
Prudence SJ Williams

SCENE FOUR:

The Beach, later that day
Jude Dan Howarth
Prudence SJ Williams

SCENE FIVE:

Hitchhiking (several days)
Jude Dan Howarth
Prudence SJ Williams
Truck Driver Dylan Croft

SCENE SIX:

South Dakota, Morning
Jude Dan Howarth
Prudence SJ Williams

SCENE SEVEN:

South Dakota,
Later that afternoon/Early evening
Jude Dan Howarth
Prudence SJ Williams
Truck Driver Irving Collins

SCENE EIGHT:

The Poets' Lounge (Montana)

Charlie Sam Bliven
Truck Driver Irving Collins
Actors Dylan Croft
Terry Alderman
Jugglers Sara Stockton
Ruth Barrie
Martha Anna Trusky
Trista Robin Fleming
Jude Dan Howarth
Prudence SJ Williams
Musicians Rick Stannard
Andrea Stannard
Artist Kathy LaVallee

The Second Step Players would like to thank Darin Keech for allowing us to adapt scenes from "The Common Itch" for this performance.

Recovery from addiction is an important issue in the mental health system. It is not easy. We feel that this play beautifully illustrates how engaging in a creative process can support recovery. It also serves as a reminder that connection with others is an integral part of healing. As both creativity and creating community are missions of Artreach, we are grateful to be able to present this adaptation of scenes from "The Common Itch."

Production Crew

Producer/Director	Becca Atkins
Stage Managers	Deb Cluff, Sara Stockton
Backstage Crew	Dasya Butts, Dennis Silva, Irving Collins, Robin Fleming, Helen Cronin, Chad Pfeiffer, Stacey Sedotti, Ruth Barrie, Tarik Clayton, Helen Norton, SJ Williams
Light Board Operator	Jim Stidfole
Sound Board Operator	Jan Robes
Sound Effects	SJ Williams
Music Editing	Becca Atkins
Scenery/Props/ Costumes	SJ Williams, Helen Cronin, Sara Stockton and all cast members who donated personal items and clothing
House Crew & Concessions	Sharon Kitlinski, Mary Ann Stroich, Lea Grant, Matt Olson, Ryan Kitlinsky, The Bakers, and The DeMarcos
Make-up Assistants	Anna Trusky, Mary Ann Johnson
Dog Wrangler	Anna Hugenin
Advance Ticket Sales	Becca Atkins
Videotaping	Bill Hamell, Ryan Pape, Kevin Benisvy
Ad Sales	Artreach Staff, Terry Alderman
Show Logo/Artwork	SJ Williams
Program Booklet/ Misc. Graphics	John Lamar, SJ Williams, Sara Stockton, Becca Atkins
Well-Being Coordinators	JoAnn Sheehan & Rick Gaumer

Special thanks to...

- Sara Stockton** for artwork.
- Frederick Vaughn** for scriptwriting.
- Darin Keech** for scriptwriting and original music.
- John Lamar** for artwork and photography.
- The Norwich Bulletin** for sponsoring newspaper ads.
- Terese Karmel** from **The Willimantic Chronicle** for press coverage.
- Kristina Dorsey** of **The New London Day** for press coverage.
- The Connecticut Commission on Tourism and the Arts and the Urban Artists Initiative** for funding toward our CD project.
- The Community Foundation of Southeastern Connecticut** for funding toward our CD project.
- Norwich Community Development Block Grant** for Work Hard/Play Hard driver's wages.
- Palmer Foundation** for our Work Hard/Play Hard ticket fund.
- Dime Bank Foundation** for funding a laser printer.
- The Bodenwein Foundation** for funding three Second Step Players performances at colleges.
- Robin Fleming** for all around support during the rehearsal process.

**Artreach
Board of Directors**

President: Sam Bliven
Secretary/Treasurer: Mary Ann Stroich

Dave Allen
Jo-Ann Holmes
Kathy LaVallee
Debbie Lehman
Mary Ann Stroich
Anna Maria Trusky

Best Wishes
In Your Continued Success!

Break A Leg!

Tina and Mark Kamercia

**Please Support Our Advertisers,
as they have supported us!**

Mental Health

Becca Atkins
Backus Hospital
CT Center for Human
Growth & Development
Reliance House, Inc.
Southeastern Mental
Health Authority
Sound Community
Services
United Services

Friends

Tina & Mark Kamercia
Friends in PA

Miscellaneous Services

Doherty, Beals & Banks
Powell, Lathrop, Orkney &
Green Insurance
Purrfect Cat Care
Willowbrook Golf Course

Merchants/Food

Joy's Country Skillet
Music Center of Norwich
Paul's Pasta
Robert's Audio/Video
Traditions

REBECCA ATKINS, MA, LPC, NCC

*Psychotherapist, National Certified Counselor
CT Licensed Professional Counselor*

Counseling and Psychotherapy for:

Anxiety • Depression
Post Traumatic Stress Disorder and Other Trauma Related Issues
Relationship Issues • Eating Disorders
Chronic Psychiatric Disorders

EMDR (*Eye Movement Desensitization and Reprocessing*)
Body Centered Gestalt Therapy
Mindfulness Training

Member: American Counseling Association and EMDR International Association

Norwich CT • (860) 367-7177



445-5276

223 THAMES STREET, GROTON

**Specializing In:
Freshly Made Pasta and
Pasta Accompaniments**

**Enjoy Lunch or Dinner
Inside or on Our Deck...
or Take Home a Pound of
Our Pasta and One of
Our Own Sauces**

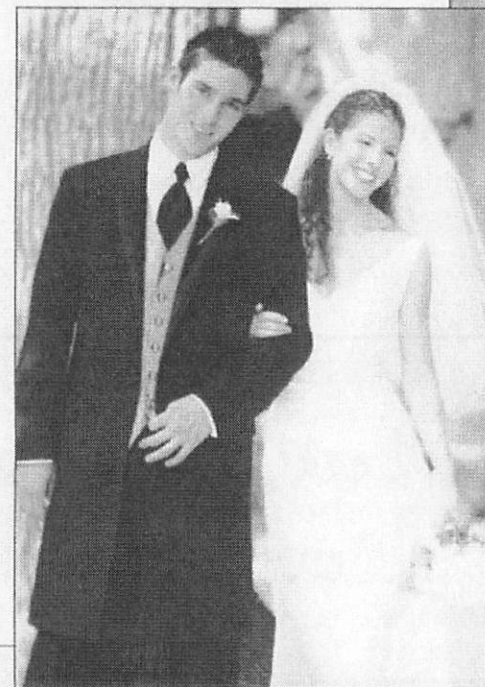
VOTED BEST VALUE IN NEW LONDON COUNTY
READER'S CHOICE AWARD - CONNECTICUT MAGAZINE
8 out of the last 10 years!

TAKE OUT MENU • RETAIL • CATERING

Traditions

A FULL-SERVICE BRIDAL SALON

85 Bridge Road, Haddam CT • www.traditionsbrides.com



*Great Selection of Mothers' and
Special Occasion Dresses.*

We have an extensive collection of beautiful gowns for the bride and bridal party, and for the mother of the bride; and the latest styles of fine tuxedos to satisfy every look and budget.

**Special orders *Alterations done on site*

860.345.7750

Open Tues. Wed. Fri. Sat. 10-5; Thurs. 12-8

Music Center of Norwich

www.MusicCenterofNorwich.com

275 West Town Street
P.O. Box 238
Yantic, Connecticut 06389

860-887-8046

Support the Arts...
Kiss a Musician

Audio & Video to fit your lifestyle...

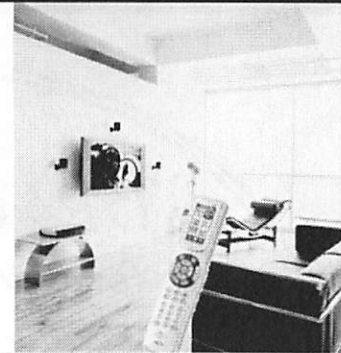
www.robertsav.com

90 Bank Street
Downtown New London

442-5314

ROBERTS

AUDIO • VIDEO



JOY'S COUNTRY SKILLET

671 WEST THAMES STREET
NORWICH CT 06360
886-5082



TUESDAY THRU FRIDAY 6:00 A.M. TO 2:00 P.M.

BREAKFAST & LUNCH

SATURDAY & SUNDAY 6:00 A.M. TO 12:30 P.M.

BREAKFAST ONLY

SOUTH OF THE NORWICH INN & SPA

PURRSONAL CAT CARE



KITTY SITTING SERVICES

Fully Bonded and Insured
Formerly Happy Pet Sitting

Ruth Barrie
(860) 887-4736

Karen Marshall
(860) 887-5512

POWELL LATHROP ORKNEY & GREEN INSURANCE

Edward Green, LUTC, CIC **Vice President**

Telephone: 860-535-1859
Fax: 860-535-4819
Voice Mail: 860-535-1702

P.O. Box 311
132 Water Street
Stonington CT 06378



Best Wishes
 for another successful
 performance
 at the Eugene O'Neill Theater!

from
 Friends in
 Kennett Square, PA



THE CONNECTICUT CENTER

For Human Growth & Development

- GESTALT • BIENERGETICS •
- PSYCHODRAMA • EMDR •

244 South Main Street, Colchester CT 06415

Call for Information: 860-537-3977

**DOHERTY
 REALS &
 BANKS, P.C.**
 CERTIFIED PUBLIC
 ACCOUNTANTS

Serving your accounting and tax needs since 1948
 187 Williams Street, New London CT 06320



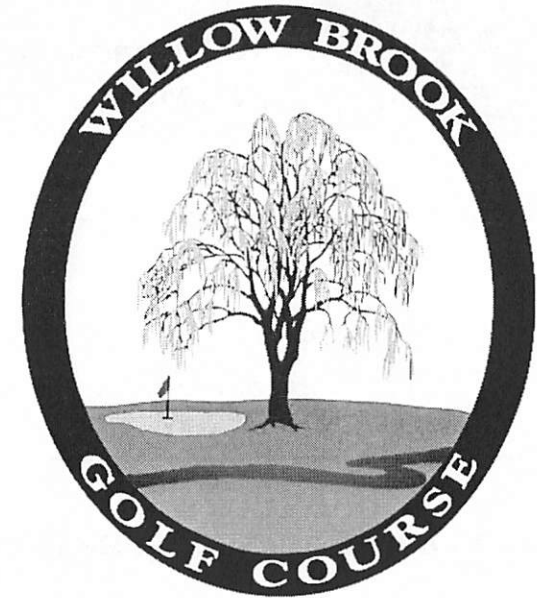
THE
SECOND
STEP
PLAYERS

We've had several new members join The Second Step Players this year, and have added some new community members to our volunteer base. We find that all participants, from program members to volunteers to audience members, benefit from the type of social rehab we offer.

We could not continue to do this work without the support of our community, our participants, and our funders. Many thanks to The State of Connecticut Department of Mental Health and Addiction Services for staying on the cutting edge of Recovery by funding the Second Step Players, and to The Southeastern Mental Health Authority for supporting us!



Willow Brook Golf Course

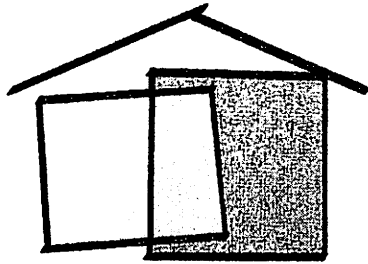


Nicole Damarjian, PH.D.
Director of Golf Instruction

124 Brookfield Street
South Windsor CT 06074

Telephone: (860) 648-2061
Fax: (860) 648-2680

www.willowbrookgc.com



**RELIANCE
HOUSE, Inc.**
realizing dreams

40 Broadway
Norwich CT 06360
860-887-6536

Good Luck

Second Step Players!

From Your Friends at Reliance House

**GOOD LUCK TO
ARTREACH & THE SECOND STEP PLAYERS**

SOUND COMMUNITY SERVICES, INC.

(formerly First Step and Integrated Behavioral Health)

Counseling

Psychiatric Services

PILOTS

Case Management

Bent Crandall Program

Supervised Apartment Program

Employment Services

Community Education

MIRP-Psychosocial

Rehabilitation

Winter Homeless Shelter



**SOUND
COMMUNITY
SERVICES**



The Second Step Players have had a very active year. Along with the development and production of our two annual projects, the Coffeehouse and the O'Neill show, we toured both locally and out of state. Our farthest tours were to SC and to Batavia, NY. While in Batavia, we took the opportunity to go to Niagara Falls and ride the Maid of the Mist right under the Falls! (see photo) Way cool.

In addition, we have been archiving old videotapes of the O'Neill shows from 1985 until now, and are creating a DVD archive of all of our work. We hope to finish this prior to next summer's 20th Anniversary celebration at the O'Neill.

We have also adapted a couple of last year's O'Neill scripts into short screenplays, and have produced films of them for use in in-service presentations for staff of local mental health agencies.

Last month, Becca was a featured guest on the PAX TV show "For the Record," which is shown nationally. She discussed both programs of Artreach; Work Hard/Play Hard and the Second Step Players.

We are currently working on an exciting music project. We have accepted submissions of original songs and poetry about mental health related issues, and have acquired funding to produce the first three songs at Riverway Recording Studio. We are seeking funding to expand the project into a 12 to 20 song CD, which we would sell at shows and on our website.

Tonight, you will see our annual theater production. What you won't see is the process of creating the project. Because our mission is to provide social rehabilitation for our program participants, it is the rehearsal process that is our primary product. We are thrilled that the by-products of our efforts are fun, artistic, educational, and often stigma-busting events.

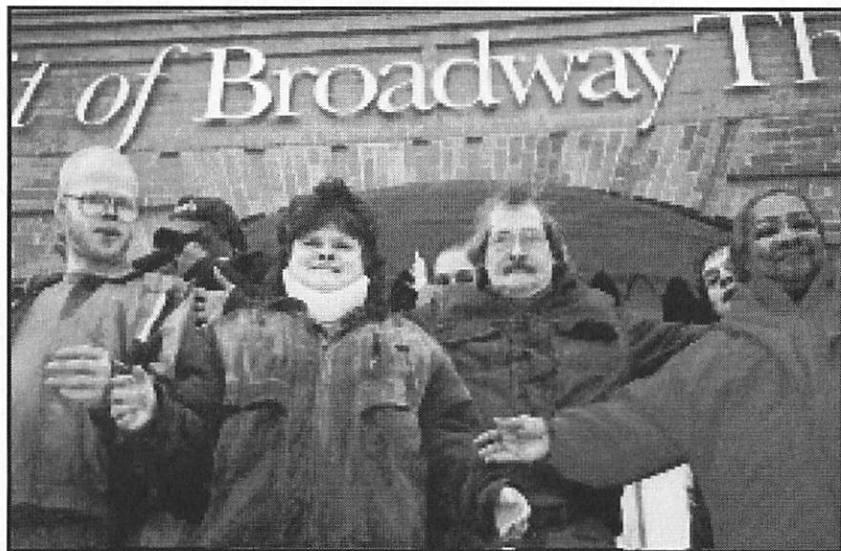


Work Hard Play Hard

Work Hard/Play Hard is a special and exciting recreation program open to all mental health consumers who are either employed or in the process of gaining the skills necessary to obtain and keep a job. The program is special in several ways; it is primarily consumer run; all events take place entirely in the community; door-to-door transportation is provided to and from all events; and the variety and quality of recreational events provided are exceptional.

Recreational events take place on evenings and weekends. Some of our favorite events this year have been the Connecticut Sun games, Coast Guard concerts and other musical events, plays at the Granite Theater and the Garde Arts Center, pottery, and community events such as Sailfest and the local art shows and festivals. Our weekly bowling and shopping trips are also well attended.

For additional information, pick up a brochure from the Button and T-Shirt Table in the lobby.



UNITED SERVICES, INC.

creating healthy communities

www.unitedservicesct.org

1007 N. Main Street
Dayville CT 06241
860-774-2020

132 Mansfield Avenue
Willimantic CT 06226
860-456-2261

233 Route 6
Columbia CT 06237
860-228-4480

303 Putnam Road
Wauregan CT 06387
860-564-6100

**United Services, Inc. is Connecticut's most comprehensive
nonprofit behavioral health center
and serves the twenty-one northeastern Connecticut communities**

"Creating Healthy Communities"

The Center currently has four major sites, Dayville, Columbia, Wauregan and Willimantic plus numerous off-site programs. A staff of over 250 includes licensed psychiatrists, social workers, marriage and family therapists, certified substance abuse counselors, case managers, prevention specialists and employee assistance professionals. United Services holds a three-year accreditation from the Joint Commission on Accreditation of Healthcare Organizations.

Clinical Services

Adult Behavioral Outpatient Services – Addiction Recovery Outpatient Services – Children and Family Behavioral Health Treatment – Emergency Mobile Psychiatric Services – Crisis Assessments

Continuing Care Services

Assertive Community Treatment (ACT) Team – Case Management Services – Domestic Violence Program – Family Violence Outreach Services – Social and Vocational Rehabilitation Programs – Residential Services and Supports

Prevention and Early Intervention Services

Communities Raising Children/Care Coordination – Community Housing/Living Skills Assistance – Early Childhood Consultation – Intensive Family Preservation/Reunification – Juvenile Justice Center – Parent Aid Services – Parent Education and Assessment Services – School to Employment Program – Teen Pregnancy Prevention – Wayside Adolescents in Crisis – Youth Services Bureau – Youth Clubs

Services to Business and Industry

Employee Assistance Program with two components: Employer Consultation Services and Employee Counseling Services. A Consortium Model meets the needs of small organizations (under 100 employees). Specific trainings are available for employers without an EAP contract.

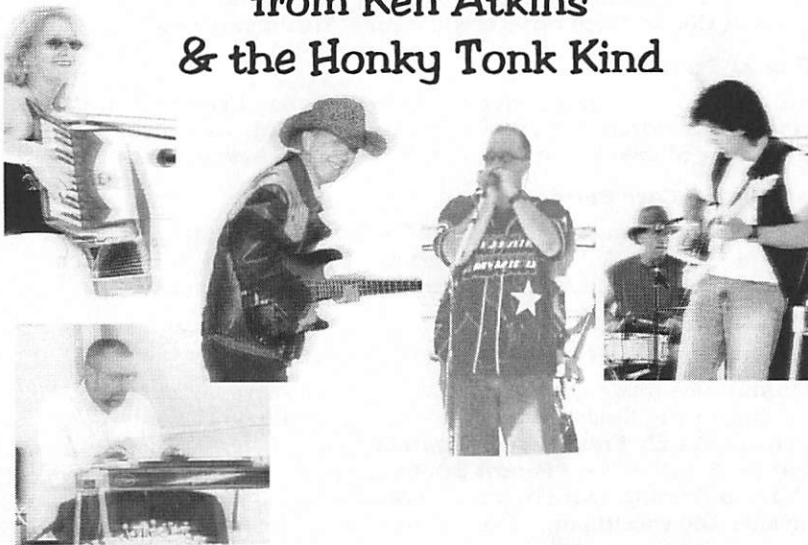
Psychiatric Services

Provided by four staff psychiatrists to serve adults, adolescents and children

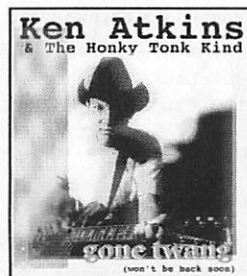


Twang On! Second Step Players

from Ken Atkins
& the Honky Tonk Kind



Check out the new CD...
available in the lobby.
All proceeds donated to
The Second Step Players.



Artreach

...because creativity heals...

ARTREACH MISSION STATEMENT

Artreach promotes healing through creativity and support of individuals with psychiatric diagnoses and their families, and challenges stigma through community education.

STATEMENT OF PURPOSE

Artreach, Inc. believes that creativity and recreation in all their forms are profoundly empowering and consequently healing endeavors. We support people who have experienced psychiatric, physical and developmental disabilities to become performers, artists, musicians and writers or to expand their ability to recreate. As a results oriented organization, Artreach's goals are to:

- Empower people who have experienced disabilities to create a culture of their own using role models that come from their own ranks; to celebrate their strengths and encourage them in their struggles by creating art forms that speak to their experiences and values;
- Educate the public about mental illness and reduce stigma by including original skits in our public performances which illustrate problems (and solutions) faced by people who have psychiatric diagnoses;
- Produce and tour high quality published work, artistic exhibitions, musical recordings and performances, and theatrical events, primarily using artistic and production personnel who have experienced psychiatric disabilities;
- Provide high quality, "on-the-job" training to artists and production personnel who have experienced psychiatric disorders for the purposes of psychosocial rehabilitation;
- Expand the community based recreational opportunities available to people who have experienced disabilities;
- Develop technologies and strategies to support people who have experienced disabilities to integrate into existing community based recreational opportunities;
- Educate the general public and the "disability community" about the essential and pivotal role recreation plays in a complete and fulfilling life for people with or without disabilities;
- Through artistic, cultural and recreational activities, encourage consumers to acquire and actively implement into their lives socialization skills necessary to community integration and obtaining and keeping employment.



The William W. Backus Hospital

Backus Hospital
is proud to
support the
Second Step Players

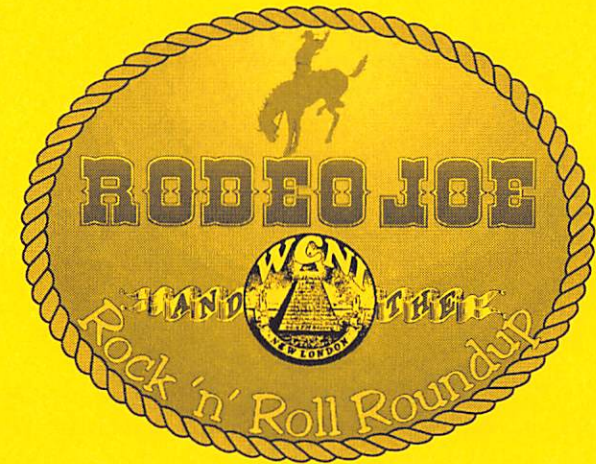


126 Washington Street • Norwich, CT • 860-889-8331

www.backushospital.org

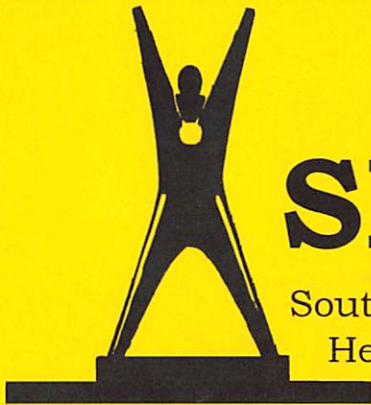
WE HE HA!

Love & Best Wishes from...



...proud to be a part of
The Second Step Players

THANKS FOR
THE JOY!



SMHA

Southeastern Mental
Health Authority

“Recovery Happens”

Brief Care Program • Mobile Outreach Team
ACCESS Team • Life Skills Program
Young Adult Services
Community Support Program
Intensive Clinical Case Management
Homeless Outreach ACT Program
Forensic Services • Jail Diversion Services
Housing Office
Consumer/Family Liason

SMHA is a State of Connecticut,
Department of Mental Health & Addiction
Services facility accredited by the

JOINT COMMISSION ON THE
ACCREDITATION OF
HEALTHCARE ORGANIZATIONS
(JCAHO)

401 W. Thames Street, Norwich CT
(860) 859-4500



another O'Neill Show
another relevant & irreverent look at mental illness

Seriously



Absolutely

Mental

Psychotic

DO YOU KNOW WHAT YOU'RE REALLY GETTING?

Welcome to our
19th annual show!

Eugene O'Neill Memorial Theater Center

August 25, 26 and 27, 2005

featuring original music by
BAND OF HUMANS